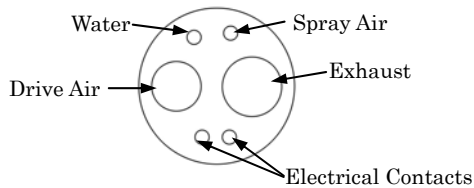
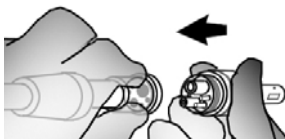


## User's Instructions for CP4-O <with light> Coupling CP4-WO <with light and Spray Control> Coupling

- \* Before use check the following items:  
Does the connection end of the tube match the coupling? Lamp voltage is correct (see 4. Specifications).  
This coupling cannot be connected to a tube that does not have light capability.



### 1. Connect Coupling



Line up the projections on the coupling with the indentations in the tube and then tighten up the cover nut.

- ⚠ **NOTE** • *Before connection, make sure the tube connector is clean and free of debris.*



Tighten securely with the wrench provided.

- ⚠ **NOTE** • *Air or water may leak if the coupling is not tightened up enough.*

- \* Before first using the coupling or if the handpiece-coupling connection gets stiff, take the nozzle off the AR Spray can and lightly spray the coupling's o-rings.

### 2. Cleaning

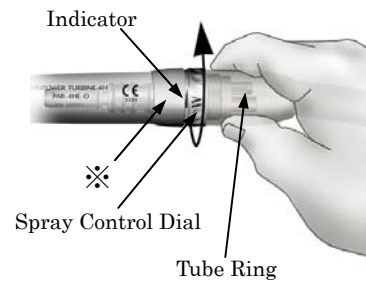
Wipe the outside cover with ethanol.

#### ⚠ **NOTE**

- *Coupling must NOT be autoclaved or cleaned ultrasonically.*
- *The coupling could be damaged if it is soaked in ethanol or cleaned with a strong, corrosive solution.*



### 3. Spray Adjustment (CP4-WO)



Turning the dial in the direction indicated by the arrow in the illustration will gradually reduce the amount of spray and then reach 0. For maximum spray, continue the turning the dial until the "W" matches up with the indicator. (See illustration.)

#### ⚠ **WARNING**

- *Hold the tube ring to adjust the amount of spray. The handpiece could come off its connection and injure someone if it is held by the part indicated by the mark (⊗).*

#### ⚠ **NOTE**

- *If the coupling is not securely tightened up with the wrench, water or air could leak.*

See back.

#### 4. Specifications

Model : CP4-O <with light>  
CP4-WO <with light and Spray  
Control>  
ISO 9168 Type C Coupling

Lamp Voltage : Max. 3.3 V  $\pm$  0.05 V D.C.  
(for coupling contacts)

Lamp Power : Max. 2.4 W

\* Lamp power supply must be conformed to IEC60601-1 and voltage is SELV (special safe low voltage).

**⚠ NOTE** • *The lamp will burn out more quickly if voltage is greater than the value specified.*

- *The lamp may burn out more quickly if the chair is set for a long fade out time.*

- *The lamp may burn out more quickly if the chair applies and cuts off the voltage suddenly.*

\* For lamp and o-ring replacement and inspection and replacement of the one-way valve, refer to the user's manual for the Handpiece.